

PRODUCT INFORMATION PACKET



Model No: C6C17NC108 A

Catalog No: 6439191261

3/4HP..1800RPM.56C.TENV.115/230V.1PH.60HZ.15 MIN.NOT.40C.1.15SF.C-FACE.BOAT HOIST.
Boat Hoist Duty



Regal and Leeson are trademarks of Regal Beloit Corporation or one of its affiliated companies.

©2018 Regal Beloit Corporation, All Rights Reserved. MC017097E



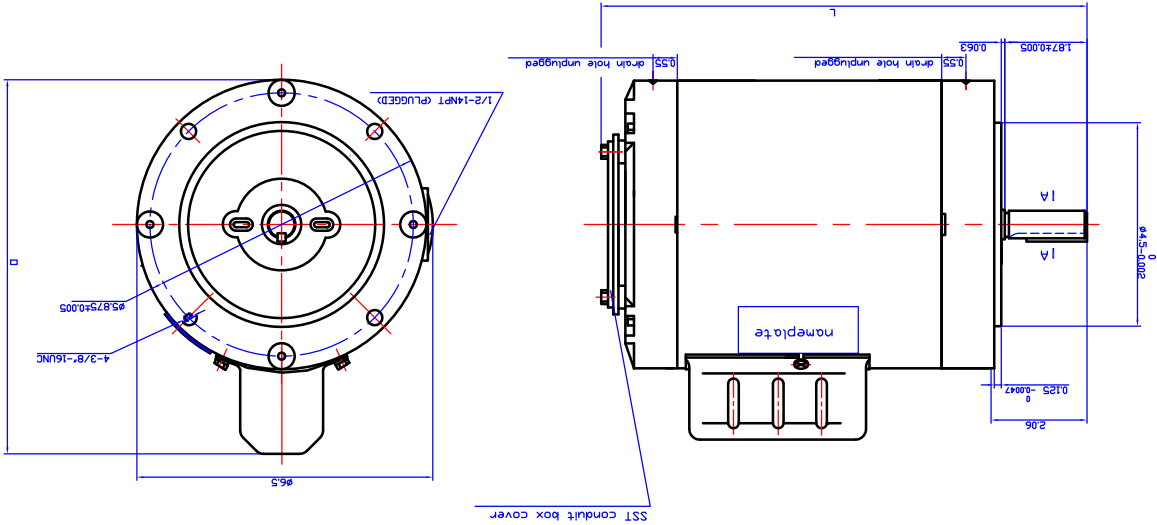
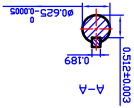


Nameplate Specifications

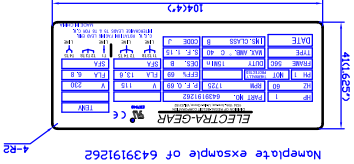
Output HP	0.75 Hp	Output KW	0.56 kW
Frequency	60 Hz	Voltage	115/230 V
Current	9.8/4.9 A	Speed	1725 rpm
Service Factor	1.15	Phase	1
Efficiency	72 %	Duty	15 Minute
Insulation Class	B	Design Code	N
KVA Code	K	Frame	56C
Enclosure	Totally Enclosed Non Ventilated	Overload Protector	No
Ambient Temperature	40 °C	Drive End Bearing Size	6203
Opp Drive End Bearing Size	6203	UL	Recognized
CSA	Y	CE	Y
IP Code	43		

Technical Specifications

Electrical Type	Capacitor Start Induction Run	Starting Method	Across The Line
Poles	4	Rotation	Selective Counterclockwise
Mounting	Round	Motor Orientation	HORIZONTAL
Drive End Bearing	BALL	Opp Drive End Bearing	BALL
Frame Material	Stainless Steel	Shaft Type	T
Overall Length	11.10 in	Frame Length	5.65 in
Shaft Diameter	0.625 in	Shaft Extension	1.88 in
Assembly/Box Mounting	F1 ONLY		
Outline Drawing	169991.00	Connection Diagram	005005.01



Electra Cat. No.	FRAME	HP	Volt	RPM	HZ	PH	Encl.	S.F.	Duty	thermal protector	L	D
6439191260	56C	1/2	115/230	1725	60	1	TENV	1.15	15Min.	N/A	10.5	8.2
6439191261	56C	3/4	115/230	1725	60	1	TENV	1.15	15Min.	N/A	11.1	8.6
6439191262	56C	1	115/230	1725	60	1	TENV	1.15	15Min.	N/A	11.7	8.6

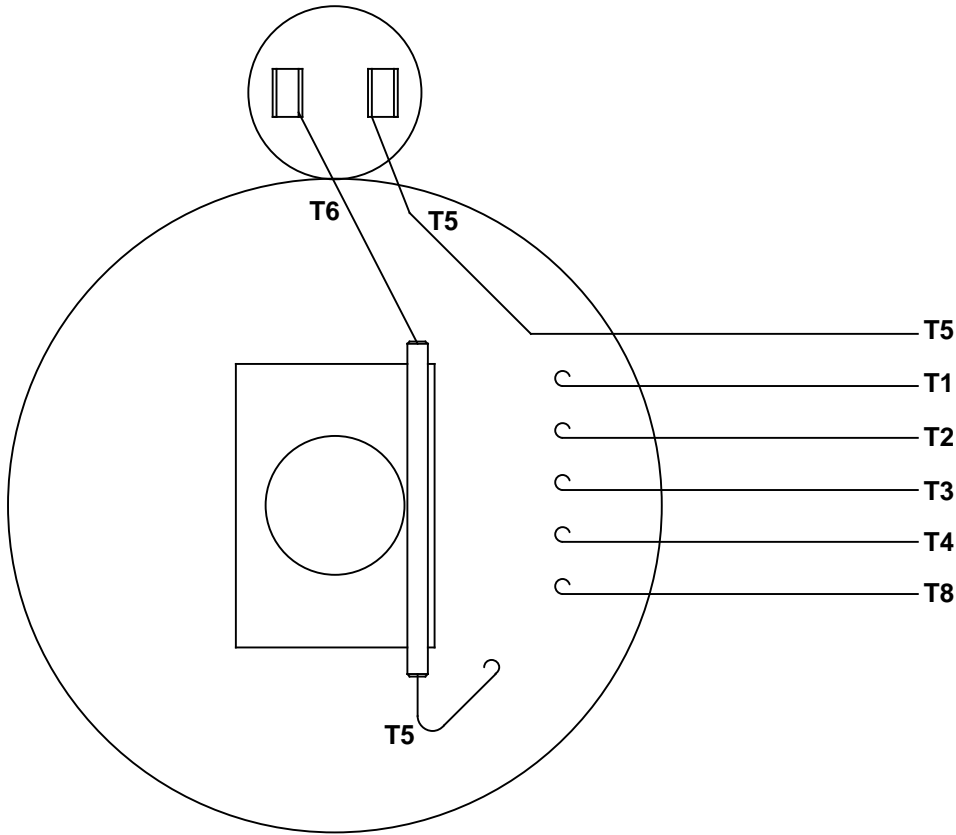


THIS DRAWING IN DESIGN AND DETAIL IS OUR PROPERTY AND MUST NOT BE USED EXCEPT IN CONNECTION WITH OUR WORK. ALL RIGHTS OF DESIGN AND INVENTION ARE RESERVED. THIS IS AN ELECTRONICALLY GENERATED DOCUMENT - DO NOT SCALE THIS PRINT.											
TOLERANCES UNLESS OTHERWISE SPECIFIED											
DRAWN											
TITLE											
6439191260,6439191261,6439191262 outline drawing											
CUSTOMER											
DATE											
2009.09.29											
REV.											
DRAWING NO.											

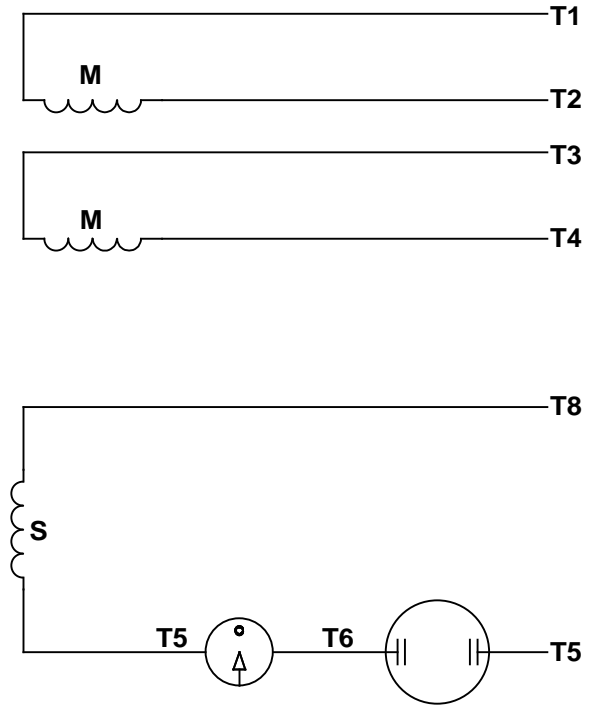
Note:

- The capacitor leads to be connected using flag terminals.
- All the hardware are using SST.
- Drain holes at 6.00.
- C flange mounting holes have plugs.

VIEW FROM OUTSIDE OF MOTOR AT SWITCH END.


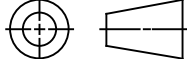


LINE LEADS



RBC PROPRIETARY AND CONFIDENTIAL INFORMATION
This document is the property of REGAL BELOIT CORPORATION ("RBC") including its subsidiaries and divisions and contains proprietary information of RBC. This document is loaned on the express condition that neither it nor the information contained therein shall be disclosed to others without the express written consent of RBC, and that the information shall be used by the recipient only as approved expressly by RBC. This document shall be returned to RBC upon its request. This document may be subject to certain restrictions under U.S. export control laws and regulations.

	ROTATION FACING LEAD END	L1	L2	JOIN
HIGH VOLT	C.C.W.	T1	T4, T5	T2, T3, T8
	C.W.	T1	T4, T8	T2, T3, T5
LOW VOLT	C.C.W.	T1, T3, T8	T2, T4, T5	-----
	C.W.	T1, T3, T5	T2, T4, T8	-----

--	REDRAWN IN SOLIDWORKS	VJB 02/16/11		TOLERANCES UNLESS SPECIFIED			ELECTRIC MOTORS GEARMOTORS AND DRIVES		DRAWN ADH 08/06/73	
27	UPDATED TO CURRENT STANDARDS	DBT 05/27/97		DEC	INCHES				CHK	
26	ADDED PAGE 32 (114787) & PAGE 33 (114788)	KAZ 12/20/95	PG	.X	±.1				APPR JCW 03/09/79	
25	ADDED PAGE 31	KAZ 04/19/95	DL	.XX	±.01	TITLE EXTERNAL WIRING DIAGRAM TYPE "C" W/O PROTECTOR		SCALE 1:1		
24	ADDED PAGES 29 & 30	KMM 03/30/95	DL	.XXX	±.005			REF FIG 2-23 C4A		
23	ADDED PAGE 28	KMM 01/27/95		.XXXX	±.0005	MAT'L DECAL - 004012		FMF MGI-2.4B		
NO	REVISION	BY & DATE	CHK	ANG	±1/2°	FINISH		PAGE OF		
<div>THIRD ANGLE PROJECTION</div> 			RFP		PREV		SIZE A	DRAWING NO 005005-01		REV
			NETWORK FILE NAME 00500501							--